

SKYDRIVE PRO – STUDENTS: WINDOWS 8 (DESKTOP CLIENT)

The **SkyDrive Pro Client for Windows** (pre-installed with Office 2013), available for download from the Microsoft website, will allow users to have direct access to documents stored on their SkyDrive Pro account from the desktop environment.

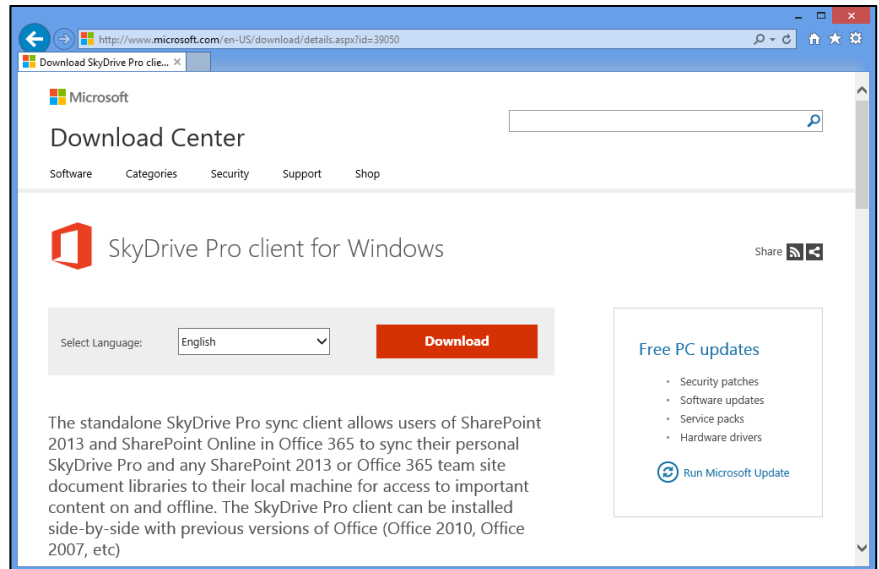
- 1 The Windows SkyDrive Pro Client software is available as a free download from the Microsoft Download Center.

<http://www.microsoft.com/en-US/download/details.aspx?id=39050>

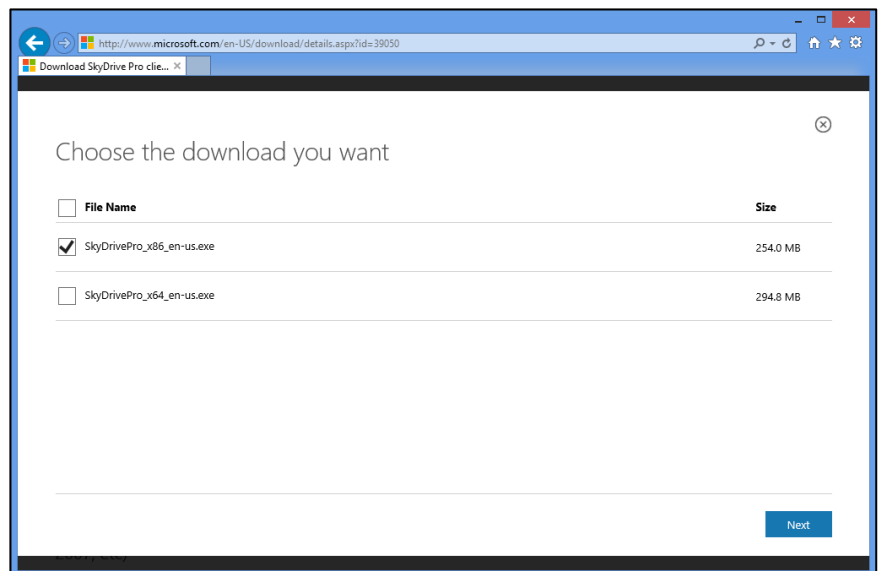
Select the **Download** button to proceed to the next step.

NOTE FOR OFFICE 2013 USERS:

The SkyDrive Pro Sync Client is pre-installed with Office 2013



- 2 Select the **SkyDrivePro_x86_en-us.exe** checkbox, then select the **Next** button



- Once downloaded, locate the **SkyDrivePro_x86_en-us.exe** installation file in your Downloads folder, double click on the file to install the SkyDrive Pro Sync Client.

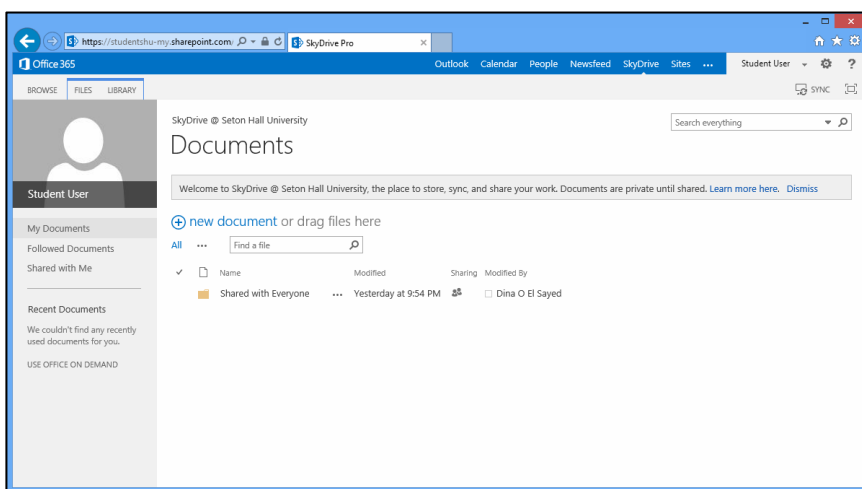


The SkyDrive Pro 2013 application tile has the two small blue clouds icon, as seen to the right.

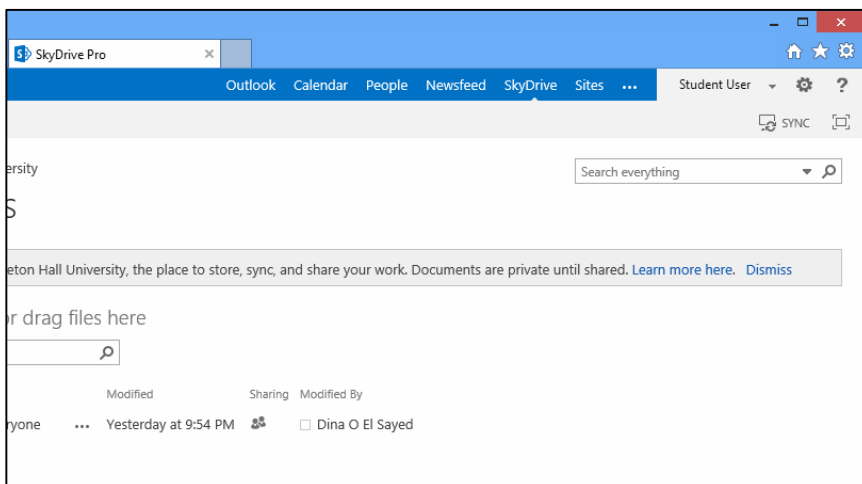
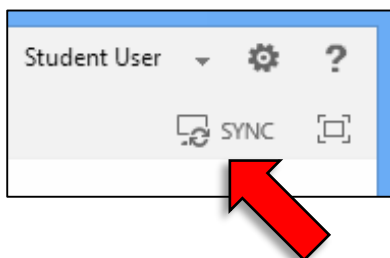
NOTE FOR WINDOWS 8 USERS:

- For users with Office 2013, the SkyDrive Pro Sync Client is pre-installed.
- There is also a SkyDrive Pro Modern UI app (white clouds on a blue tile).

- Open a web browser and sign into your first.last@student.shu.edu email account, then select the **SkyDrive** tab.

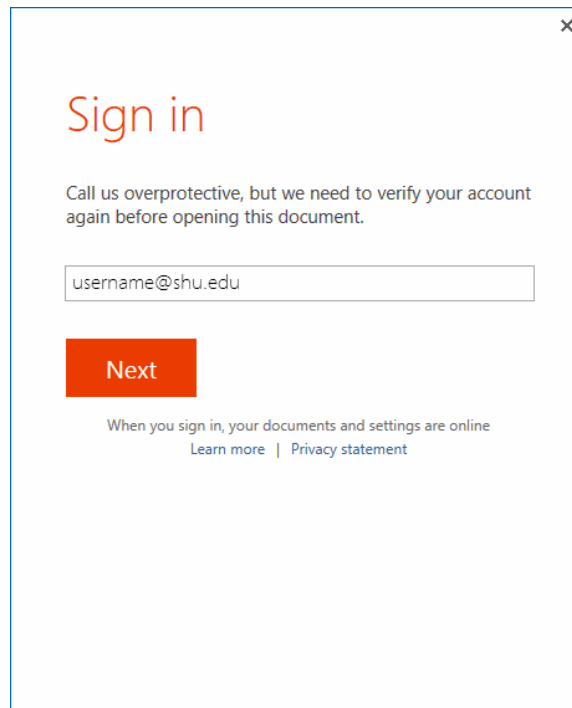


- Select the Sync button at the upper right corner of the page, located just below your name.



- 5.1 If you are not using a Seton Hall University issued computer, a Sign in prompt will appear.

Enter your [username@shu.edu](#) and then select the **Next** button



Sign in

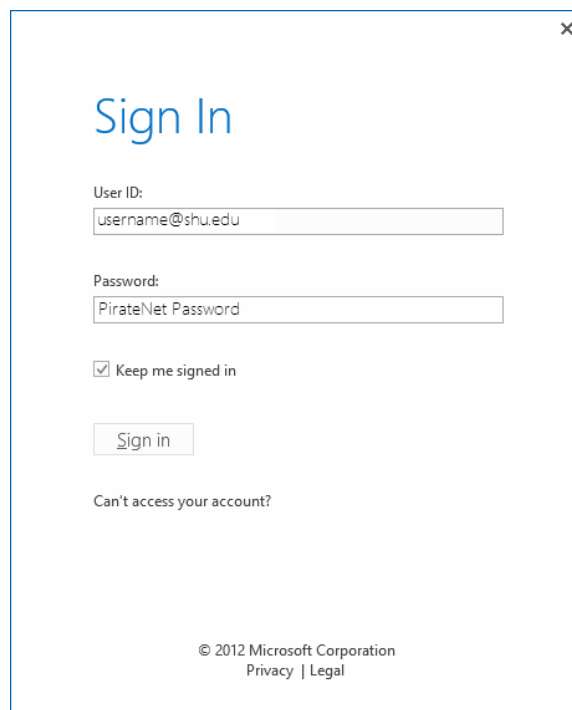
Call us overprotective, but we need to verify your account again before opening this document.

username@shu.edu

Next

When you sign in, your documents and settings are online
[Learn more](#) | [Privacy statement](#)

- 5.2 Enter your PirateNet Password, then select the **Sign in** button



Sign In

User ID:
username@shu.edu

Password:
PirateNet Password

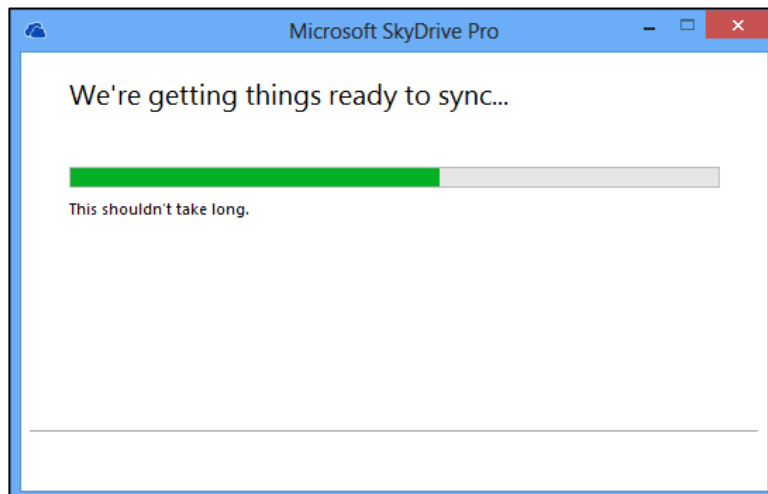
Keep me signed in

Sign in

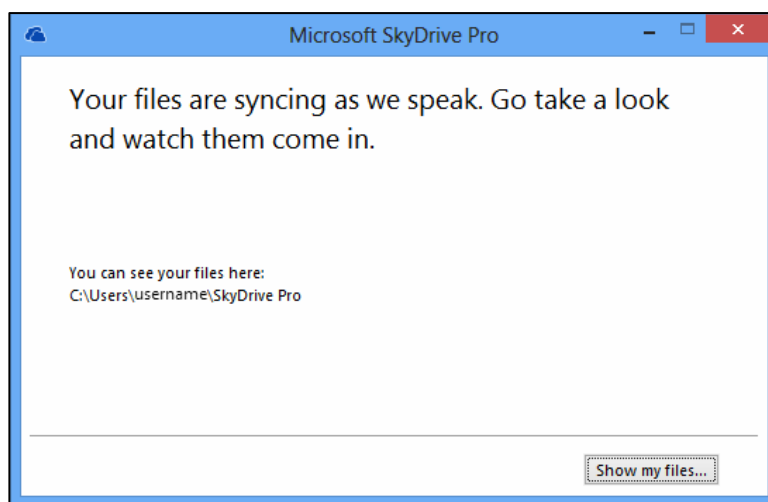
Can't access your account?

© 2012 Microsoft Corporation
Privacy | Legal

- 6 The SkyDrive Pro Sync Client will start to sync your files.



- 7 Select the **Show my files...** button to complete the SkyDrive Pro Sync Client setup.



- 8 A SkyDrive Pro folder will be added to your "Favorites" area in the Windows File Explorer.

