

SKYDRIVE PRO – WINDOWS 8 MODERN UI

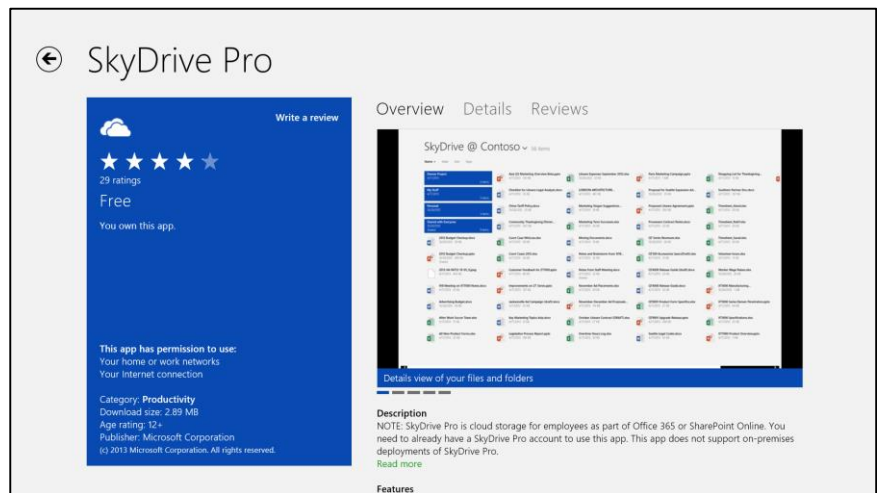
The **SkyDrive Pro app** for the Windows 8 Modern UI (Metro) interface is available as a free download from the Microsoft Store.

The following directions are specific to students who log into the SHU domain (undergraduate students).

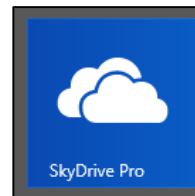
- 1 The **Windows 8 SkyDrive Pro app** is available as a free download from the Microsoft Store.

Select the link below to go directly to the SkyDrive Pro app on the Microsoft Store:

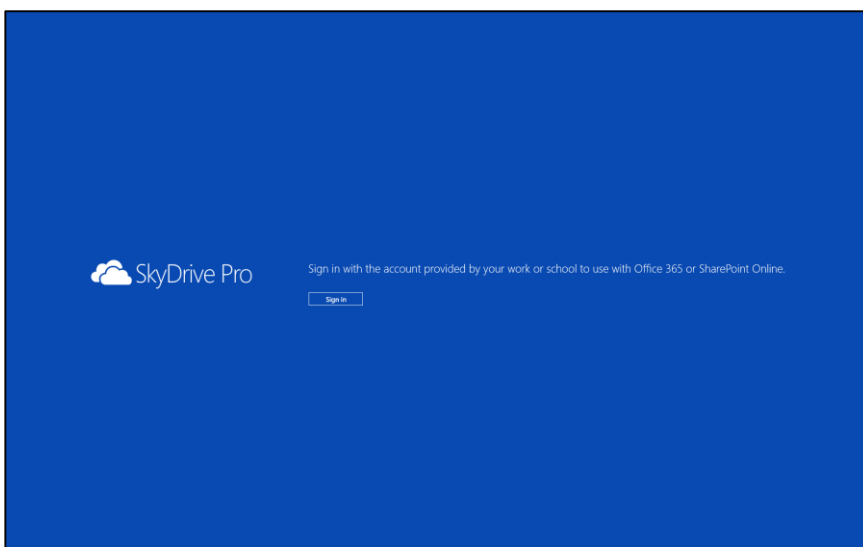
<http://apps.microsoft.com/windows/en-us/app/skydrive-pro/d78bf57e-27fe-403e-b49b-701dedfdbf9e>



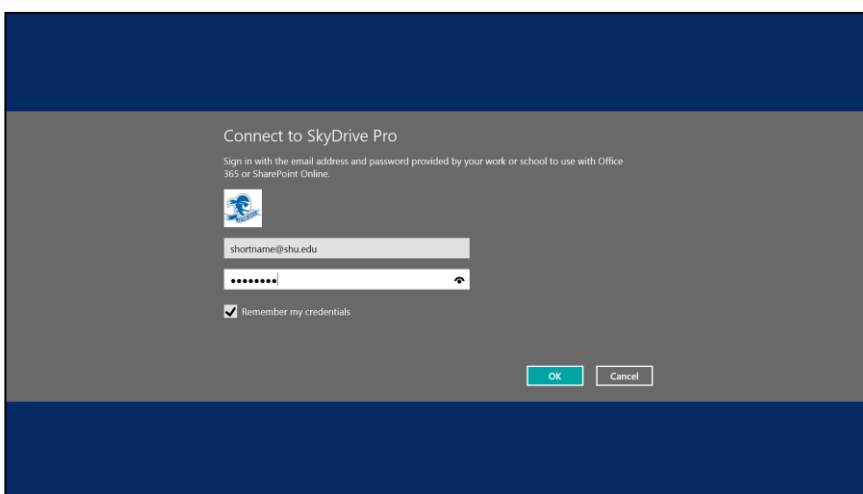
- 2 Once installed, launch the Windows 8 Modern UI SkyDrive Pro app.



- 3 The first time that you launch the SkyDrive Pro app, select the **Sign In** button



- 4 Enter your Seton Hall University shortname@shu.edu and PirateNet password, then select OK



- 5 Your SkyDrive Pro files will be displayed.

To upload files, Right-click or swipe up from the bottom edge to reveal the app bar and select the Upload button.

To update your password, swipe in from the right edge to display the Charms bar, select Settings, and then Select Options.

