



**Promoting
Professional
Practice**

**The College of
Education and
Human Services is a
New Jersey
Professional
Development
Provider.
Documentation of
two (2) hours of**



Contact Lucy Vazquez for
additional information
regarding this presentation.
Tel: 973-761-9450

Q-Interactive and the WISC - V



The **WISC-V** is suitable for use in schools, clinics, hospitals, universities and forensic settings. Use **WISC-V** results to:

- Identify/qualify students for special services
- Evaluate children for cognitive delays, intellectual disabilities, autism and giftedness
- Determine attendance eligibility for private schools
- Determine impacts of TBIs on cognitive functions
- Determine cognitive abilities during custody hearings

**Q-Interactive & The Wechsler
Intelligence Scale for
Children - 5th Ed.**

NCATE
The Standard of Excellence in
Teacher Preparation

Seton Hall University
College of Education and Human
Services
Department of Professional
Psychology & Family Therapy
School & Community Psychology
Program

Q-Interactive and The Wechsler Intelligence Scale for Children - 5th Ed.

**Presenter: Christina Biloh,
Ed.S., NCSP
Pearson Corporation**

This workshop is sponsored by the
School & Community
Psychology Program and the
student organization SPLASH (School
Psychology Leadership
Association of Seton Hall).

Program Director:
Thomas Massarelli, Ph.D.
Adjunct Professor:



Q-Interactive /WISC-V

This workshop will provide school psychologists an orientation to the features of the new Wechsler Intelligence Scale for Children-5th Edition (WISC-V). The presenter will introduce users to the new subtests, index scales, test structure, administration and scoring procedures for the new subtests, steps to interpretation and an example on how to use the tool to assist with LD identification purposes. The presenter will also do a brief demonstration of the new digital options available for WISC-V: the Q-interactive iPad digital assessment system and the Q-global online scoring and reporting system.

Learning Objectives will include:

1. Describe the differences between WISC-IV to WISC-V.
2. Identify the proper administer and scoring procedures of the new subtests.
3. Describe the differences between the Q-global and Q-interactive digital applications of the WISC-V.
4. Identify the WISC-V steps to interpretation including features designed to help identify learning disabilities.

A power-point handout will be available to all workshop participants.

Q-Interactive / Wechsler Intelligence Scale for

Children - V

Presented by Christina F. Biloh, M.Ed., Ed.S., NCSP

Pearson Clinical Consultant

Wednesday, February 11th, 2015

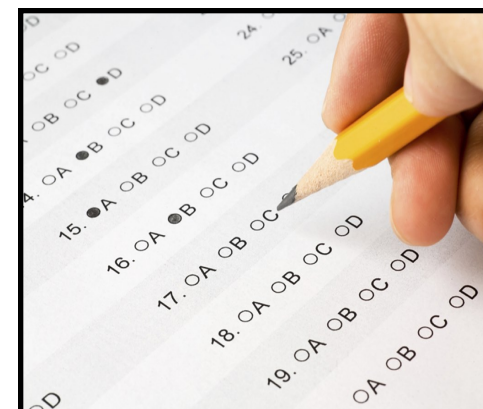
6:00 PM - 8:00 PM

Nursing Amphitheatre—I13

**Admission: Students/Graduates: Free
Guests: \$10.00**

Presenter: Christina F. Biloh, M.Ed., Ed.S., NCSP

Christina is currently employed as the Northeast Regional Manager for Pearson Clinical Assessment and is responsible for managing the activities of the region's Assessment Consultants. Previous to that, she functioned as the Upstate NY and New England Assessment Consultant for Pearson and as a National Measurement Consultant for AGS Publishing. Prior to her duties at Pearson and AGS, Christina was a certified school psychologist (NCSP) and provided consultation and assessment services to education programs in Western New York and supervised practicum level interns through the University of Buffalo's School Psychology program.



This presentation meets NASP Domain Standards: Standard #1 Data-Base Decision-Making and Accountability, Domain #3 Interventions and Instructional Support to Develop Academic Skills, and Domain #9 Research and Program Evaluation.

To register please contact Lucy Vazquez at 973-761-9450/9451. If you require accommodations please contact Lucy so arrangements can be made.